

# ***SHUE NEWS***

***OFFICIAL NEWSLETTER FOR  
SNOWSHOE CAT LOVERS***

***APRIL***



***2012***



**CLICK FOR NEXT SLIDE**

**PHOTOGRAPHER - KEN MCVAY**

## **GENERAL DESCRIPTION - 'BY' HELLEN POUNDS**

**FOR THE PERFECT RECIPE TO MAKE A SNOWSHOE CAT: TAKE A SPLASH OF POINTED COLORS WITH THE LIGHTER COLORED BODY COAT FROM THE SIAMESE. ADD THE WHITE TUXEDO LOOK WITH WHITE FEET FROM THE AMERICAN SHORTHAIR SIDE OF THEIR ANCESTORS, AND TOGETHER THIS WILL RESULT IN THE WHITE FEET (WITH OR WITHOUT A WHITE FACE), BLUE EYES, A MEDIUM BODY WITH LONG LEGS AND SHORT HAIR THAT WILL PRODUCE THE UNIQUE SNOWSHOE LOOK. BUT THE SNOWSHOE IS NOT 'JUST ANOTHER PRETTY FACE'. PACKED INTO THAT UNIQUE LOOK IS ALSO A UNIQUE PERSONALITY. ADD NOW THE SIAMESE INTELLIGENCE ALONG WITH MANY OF THE OTHER SIAMESE TRAITS THAT MAKE THE SNOWSHOE WHAT IT IS TODAY - AND WHY IT IS STILL BRED BACK TO THE SIAMESE TO MAINTAIN THAT INHERITANCE. FINALLY, ADD A DASH MORE OF THE AMERICAN SHORTHAIR TO ROUND OFF THE EDGES OF THE BODY AND CONTRIBUTE A BIT OF A LESS EXOTIC BUILD AND PERSONALITY AND YOU ARE GETTING CLOSE TO THE FINAL PRODUCT.**

**WHEN SELECTING THE INGREDIENTS, TAKE CARE NOT TO OVERWHELM THE BLUE EYES OR THE POINTED COLORS BY CAREFULLY SELECTING A COLOR AND BUILD THAT DOES NOT ELIMINATE THE LOOK OR DISTORT THE PERSONALITY: AND YOU WILL HAVE A SNOWSHOE CAT!**



**CLICK ARROW FOR NEXT SLIDE**

## **ORIGIN / HISTORY - 'BY' HELLEN POUNDS**

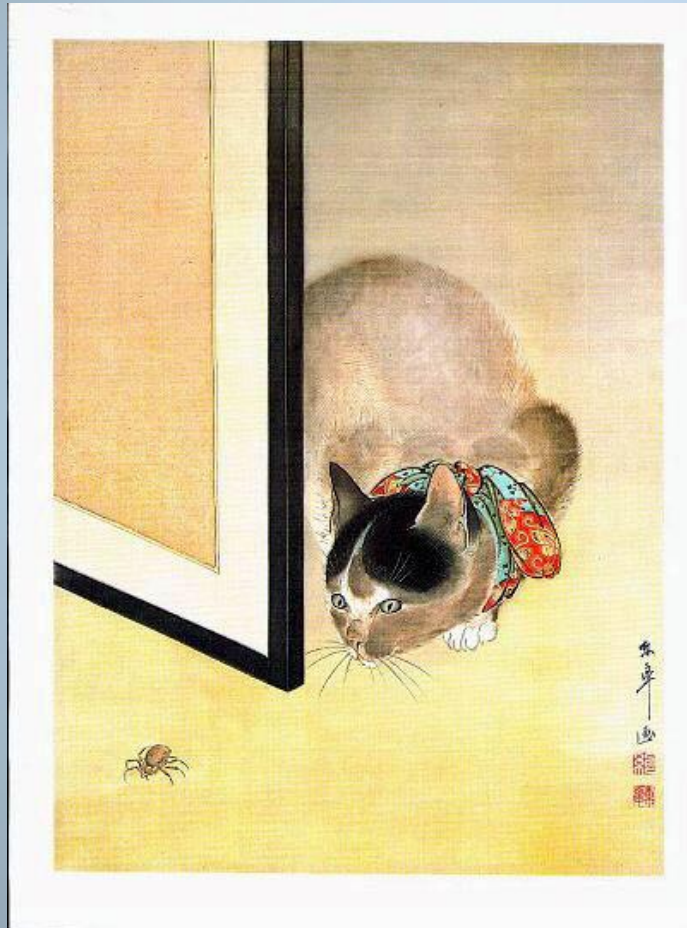
**THE ORIGIN OF THE SNOWSHOE CAN BE TRACED BACK TO THE EARLY 1960'S WHEN DOROTHY HINDS DAUGHERTY, PHILADELPHIA, PENNSYLVANIA FOUND THREE KITTENS IN A LITTER OF SIAMESE, EACH WITH FOUR WHITE FEET. DOROTHY LIKED THE UNIQUE COMBINATION OF POINTED COLORS AND WHITE FEET AND BEGAN THE PROCESS TO ESTABLISH A BREED. IN DEVELOPING THE BREED, DOROTHY BRED THE KITTENS TO A DOMESTIC (AMERICAN SHORTHAIR) CAT WITH TUXEDO MARKINGS AND EVENTUALLY DEVELOPED THE POPULAR WHITE 'V' FACIAL MARKINGS. THE AMERICAN SHORTHAIR WAS STILL PENDING RECOGNITION AS A BREED AT THAT TIME. THE RESULT OF THE BREEDING TO A DOMESTIC CAT PRODUCED A CAT THAT IS UNLIKE EITHER OF THE TWO ANCESTORS WITH A COMBINATION OF THE PERSONALITY OF BOTH ANCESTORS.**

**MUCH OF THE HISTORY OF THE SNOWSHOE WAS LOST DUE TO POORLY KEPT RECORDS OVER TIME AND THE ORIGINAL PATTERN RESTRICTIONS WHICH DISCOURAGED BOTH NEW AND OLD BREEDERS BECAUSE OF THE INCONSISTENCIES OF THE WHITE PATTERNING. BETWEEN 1960 AND 1977, INTEREST IN THE BREED HAD DECLINED UNTIL THERE WAS ONLY ONE BREEDER IN 1977, BUT BY 1989, THERE WERE CLOSE TO THIRTY DOCUMENTED BREEDERS. THE INTERNATIONAL CAT ASSOCIATION (TICA) ACCEPTED THE SNOWSHOE AS A CHAMPIONSHIP BREED IN 1994.**



**CLICK ARROW FOR NEXT SLIDE**

**THE EARLIEST DOCUMENTED EVIDENCE OF THE  
SNOWSHOE CAT IS THIS JAPANESE PRINT**



**THROUGH-OUT  
HISTORY, SIAMESE  
HAVE OCCASIONALLY  
THROWN WHITE  
(MITTED) BABIES,  
INDICATING THE  
PRESENCE OF THE  
RECESSIVE WHITE-  
SPOTTING FACTOR.**

**PHOTOGRAPHER - UNKNOWN**

**CLICK ARROW FOR NEXT SLIDE**

## **PERSONALITY - 'BY' HELLEN POUNDS**

**THE SNOWSHOE PERSONALITY IS AS UNIQUE AS THEIR APPEARANCE AND IS NEVER BORING. THE PERSONALITY IS A COMPLICATED MIX OF MYSTICAL ALOOFNESS ALONG WITH A SLIGHT DASH OF 'NORMAL' CAT. LIKE SNOWFLAKES AND COLORING, NO TWO CATS HAVE THE SAME PERSONALITY. SOME ARE SHY, SOME ARE BOSSY (BUT NICE), AND SOME ARE CAREGIVERS, TAKING THE ROLE OF WORRYING ABOUT THEIR ADOPTED PERSON AS THOUGH IT WERE THEIR LIFELONG AMBITION. GENERALLY A 'TALKER', WITH A SOFT, MELODIC VOICE THE SNOWSHOE NORMALLY HABITATS WELL IN A MULTIPLE CAT FAMILY BUT SOME ARE LONERS AND PREFER YOUR TOTAL ATTENTION. ALMOST ALL ARE INQUISITIVE AND ACTIVE, OFFERING MANY HOURS OF DELIGHTFUL ENTERTAINMENT AND A CAT'S LIFETIME OF AFFECTIONATE COMPANIONSHIP.**

**MOST SNOWSHOES FORM A PRIMARY BOND WITH THEIR CHOSEN PERSON WHILE STILL MAINTAINING FRIENDSHIP WITH OTHER PEOPLE. THEY KNOW WHAT YOU ARE GOING TO DO LONG BEFORE YOU KNOW IT. THEY LIKE TO BE NEAR YOU, BUT UNLIKE A DOG, THEY PREFER TO LEAD YOU THAN TO FOLLOW YOU. THE RESULTING PERSONALITY IS NOT FOR EVERY CAT OWNER AND BEING 'OWNED' BY A SNOWSHOE IS SOMETHING YOU HAVE TO EXPERIENCE TO APPRECIATE. ONCE 'OWNED', YOU WILL PROBABLY NEVER WANT TO BE WITHOUT ONE.**

**CLICK ARROW FOR NEXT SLIDE**





## **COLORS - 'BY' HELLEN POUNDS**

**SNOWSHOE KITTENS ARE BORN TOTALLY WHITE. THE POINT COLORING BEGINS TO DEVELOP IN A FEW WEEKS. THE TAIL, LEGS, HEAD AND EARS DARKEN AS THE KITTEN AGES. THE BODY IS A LIGHTER COLOR RANGING FROM A LIGHT CREAM COLOR WITH THE SHADING DARKENING WITH AGE. THE MOST COMMON COLORS ARE SEAL POINT AND BLUE POINT. THE LIGHTER COLORS OF CHOCOLATE, LILAC, ETC ARE LESS COMMON BECAUSE OF THE SPECIALIZED BREEDING REQUIRED TO PRODUCE THE LIGHTER COLORS AND BECAUSE THE LIGHTER COLORS DO NOT PRODUCE AS GOOD A CONTRAST BETWEEN THE POINT COLOR AND THE WHITE FEET. THE SNOWSHOE EYE COLOR RANGES FROM A SPARKLING BLUE EYE COLOR TO A PALE BLUE GRAY COLOR. PAW PADS MAY BE A COMBINATION OF POINT COLOR OR PINK OR A COMBINATION OF POINT COLOR AND PINK.**



**CLICK ARROW TO GO BACK ONE SLIDE**



**CLICK FOR NEXT SLIDE**

## **TYPE / SIZE - 'BY' HELLEN POUNDS**

**THE SNOWSHOE IS A WELL BALANCED CAT, NEITHER TOO SMALL NOR TOO LARGE; IT IS FIRM, MUSCULAR WITHOUT BEING BULKY AND DECEPTIVELY POWERFUL AND AGILE. THE BODY HAS THE APPEARANCE OF A RUNNER AND JUMPER RATHER THAN THAT OF A WEIGHT LIFTER BEING MODERATELY BUT NOT EXTREMELY LONG GIVING THE BODY THE APPEARANCE OF A RECTANGLE. THE EARS ARE MEDIUM LARGE AND CONTINUE THE TRIANGULAR SHAPE OF THE HEAD. THE PAWS ARE OVAL TAPERING TO THE TOES, AND ARE MEDIUM IN SIZE.**



**CLICK ARROW TO GO BACK ONE SLIDE**



**CLICK ARROW FOR NEXT SLIDE**

## **COAT - 'BY' HELLEN POUNDS**

**THE SNOWSHOE IS A SHORTHAIR CAT, NOT TO BE CONFUSED WITH EITHER A BIRMAN OR A RAGDOLL AND IS NOT RELATED TO EITHER OF THESE BREEDS. THE COAT IS A SINGLE LAYER WITH NO EVIDENCE OF AN UNDERCOAT AND IS USUALLY SMOOTH TO THE TOUCH. THE SHORT HAIR COAT PROVIDES FOR AN EASY TO GROOM COAT AND MOST SNOWSHOES WILL GROOM THEMSELVES UNLESS THEY ARE NOT FEELING WELL OR ARE STRESSED.**



**CLICK ARROW TO GO BACK ONE SLIDE**



**CLICK ARROW FOR NEXT SLIDE**



# **SNOWSHOE STORIES – 'BY' MEMBERS**

## **SNOWSHOE STORIES BY MEMBERS**

***SUBMIT YOUR STORY FOR INCLUSION HERE. EXAMPLES OF POSSIBLE TOPICS ARE:***

- **HOW I MET MY SNOWSHOE**
- **MY SNOWSHOES FAVORITE PASTIME**
- **AMAZING THINGS MY SNOWSHOE DOES**
- **HOW I RESCUED MY SNOWSHOE**
- **SHOWING MY SNOWSHOE AS A HOUSEHOLD PET**
- **HOW I SPOIL MY SNOWSHOE**
- **WHAT I HAVE TAUGHT MY SNOWSHOE**
- **WHAT MY SNOWSHOE HAS TAUGHT ME**

***FEATURE YOUR SNOWSHOE ON THIS PAGE/ IN THIS SECTION. INCLUDE A PHOTO WITH YOUR SNOWSHOE'S NAME AND AT LEAST YOUR FIRST NAME AS THE PERSON 'OWNED BY YOUR SNOWSHOE' (HINT, YOU CAN DO A STORY AND ADD A PHOTO OF THE SNOWSHOE IN THE STORY)***



**CLICK ARROW TO GO BACK ONE SLIDE**



**CLICK FOR NEXT SLIDE**

## **FEATURED SNOWSHOE – 'BY' HELLEN POUNDS**

### **PIXIE**

**I MET MY PIXIE AT A CAT SHOW. I WAS NEW TO CATS AND CAT SHOWS SO I WENT TO A LOCAL SHOW TO LEARN ABOUT BOTH. AT THE CAT SHOW THE LOCAL RESCUE ORGANIZATION HAD SEVERAL CATS THEY WERE OFFERING FOR ADOPTION. I SAW PIXIE AND IMMEDIATELY FELL IN LOVE WITH HER. THE ORGANIZATION PEOPLE TOLD ME SHE HAD BEEN FOUND ON THE STREETS. SHE WAS THIN AND SMALL AND APPROXIMATELY 6 MONTHS OLD BUT LOOKED MUCH YOUNGER BECAUSE OF HER SIZE. WHEN I TOOK PIXIE HOME, SHE RAIDED MY TRASH CAN AT NIGHT FOR ABOUT A MONTH EVEN THOUGH I PROVIDED GOOD FOOD AND KEPT FOOD AVAILABLE ALL THE TIME. PIXIE NEVER DID GROW ANY BIGGER (WITH ONE EXCEPTION). I HAD TAKEN PIXIE TO THE VET FOR AN EXAM AND TO GET HER SPAYED. THE VET GAVE HER THE SHOTS BUT TOLD ME TO BRING HER BACK WHEN SHE WAS IN BETTER PHYSICAL CONDITION FOR THE SPAY. PIXIE SOON BEGAN TO LOOK LIKE SHE HAD SWALLOWED A FOOTBALL - SO I TOOK HER BACK TO THE VET. HE TOLD ME SHE WAS PREGNANT. ABOUT A MONTH LATER, PIXIE WOKE ME UP TO LET ME KNOW SOMETHING WAS WRONG. SHE HAD DELIVERED SEVERAL OF WHAT TURNED OUT TO BE TEN KITTENS, BUT THE ONES ALREADY DELIVERED WERE ALL DEAD. I STAYED WITH HER WHILE SHE DELIVERED THE LAST OF HER KITTENS. THREE OF THEM DID SURVIVE BIRTHING BUT ONE OF THEM DIED LATER. OF THE TWO THAT ULTIMATELY DID LIVE, ONE WAS A BLACK AND WHITE TUXEDO AND ONE WAS A TOTALLY BLACK CAT. I NAMED THE BLACK AND WHITE TUXEDO KITTEN 'GREMLIN' AND THE TOTALLY BLACK KITTEN 'GOBLIN'.**

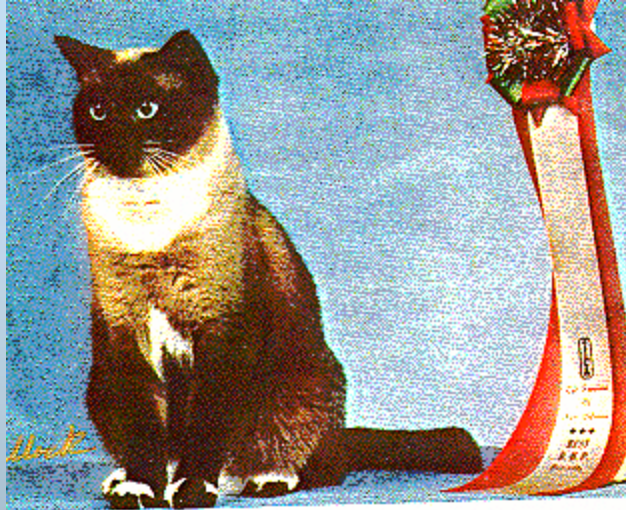


**CLICK FOR NEXT SLIDE**

## **FEATURED SNOWSHOE (CONTINUED) - 'BY' HELLEN POUNDS**

**PIXIE**

**THE FOLLOWING PHOTO IS OF PIXIE AFTER SHE BECAME A 'SUPREME GRAND MASTER HOUSEHOLD PET'. BUT PIXIE WAS NOT JUST ANOTHER PRETTY FACE; SHE WAS THE BOSS OF ALL OF MY SNOWSHOES FOR THE REST OF HER LIFE. SHE LIVED FOR 18 YEARS AFTER SHE CAME TO LIVE WITH ME.**



**CLICK ARROW TO GO  
BACK ONE SLIDE**

**CLICK FOR NEXT SLIDE**

**PHOTOGRAPHER - KEN BULLOCK**

# **COPYRIGHT NOTICE**

**ALL MATERIAL IN THIS PUBLICATION IS COPYRIGHTED.**

**AUTHORS ARE NOTED AT THE BEGINNING OF A SECTION PRECEDED WITH 'BY'.**

**MULTIPLE COPYRIGHTS ARE 'OWNED' BY THE AUTHOR OF EACH SECTION.**

**PHOTOGRAPH COPYRIGHTS ARE OWNED BY THE NOTED PHOTOGRAPHER.**

**DO NOT USE ANY MATERIAL FROM THIS PUBLICATION WITHOUT PERMISSION OF THE AUTHOR OR PHOTOGRAPHER.**



**PRESS THE ESC KEY ON YOUR KEYBOARD TO END SLIDE SHOW**